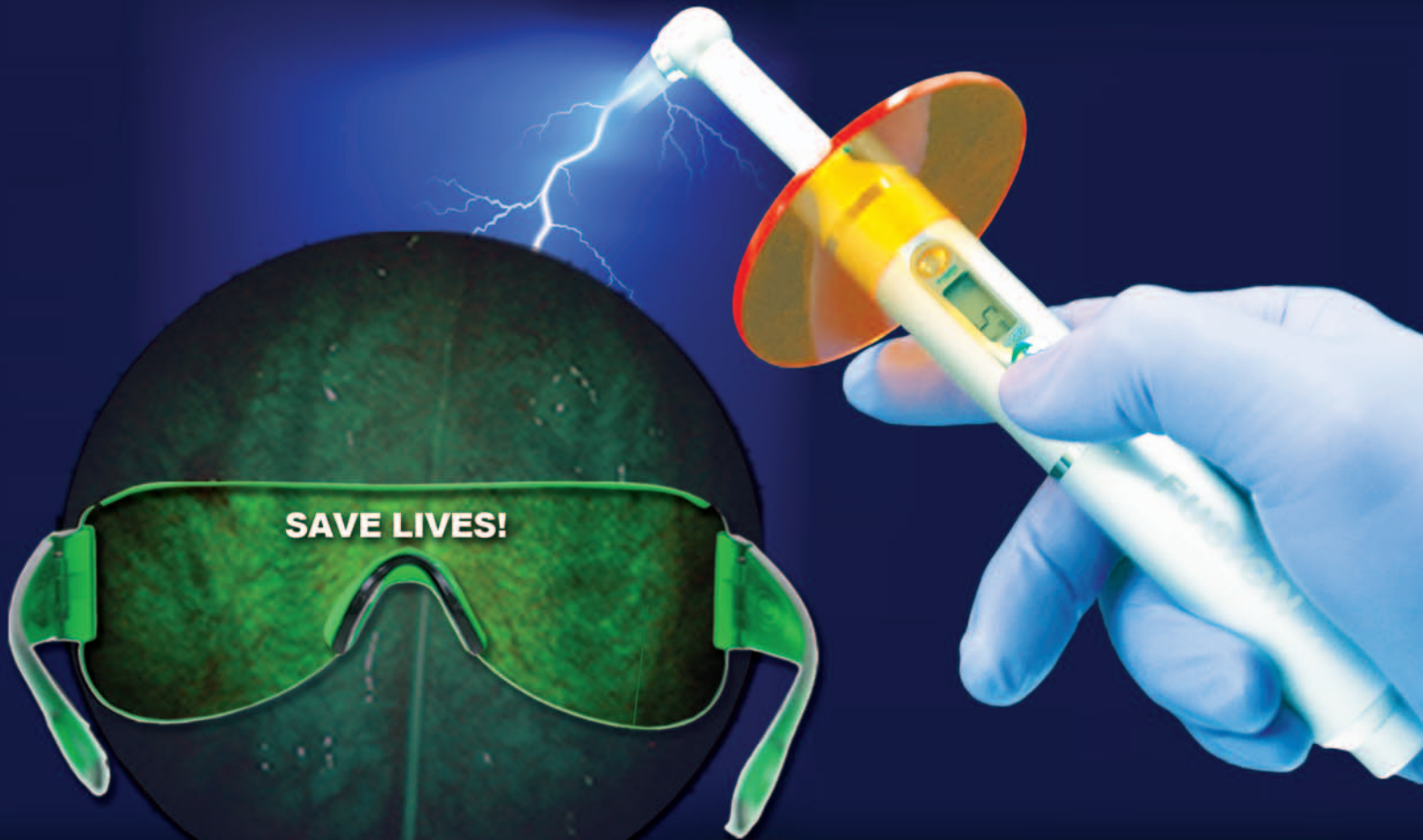


**FINALLY, the LIGHT THAT
YOU CAN COUNT ON!**



SAVE LIVES!

**FUSION-DOE
Curing-Exam Light**

Lightning Power, Speed and Accuracy!



DentLight

FUSION-DOE - The Most Reliable and Versatile Curing Light

The Best Bang for your Buck!

Amazing Cordless Power in the Palm of Your Hand!

The award winning and clinically proven cordless FUSION 3.0 outputs a laser-sharp focused beam of 2700 mW/cm² power that enables rapid cures in 5 seconds. The new release improves on ease of use and work efficiency with automatic power load and three preset digital timers for single layer, bulk, multiple restorations, and veneer cures with a easy one-push activation. Its amazing power, incredible engineering design and proven quality will make this curing light your office favorite.

- Cordless with rechargeable smart lithium-ion battery
- Unique focused beam with two power level settings
 - Plasma-like High Power mode for fast/deep cure
 - Standard LED Power mode for low heat cure
- Wide spectrum of 415 - 490nm to cure all materials
- 45 minute run time
- Shock-proof durable solid metal construction
 - No fiber optic light guide necessary
 - Easy cleaning and disinfection
 - Modular with easy upgrade and service parts
- Raised metal keypad with LCD digital displays
- Cordless with direct power plug that eliminates downtime
- 90 minute super fast recharge time
- 360° swivel head

Built to Last

Robust anodized aluminum metal construction distributes LED heat, prevent scratches, discoloration and damage from accidental falls.



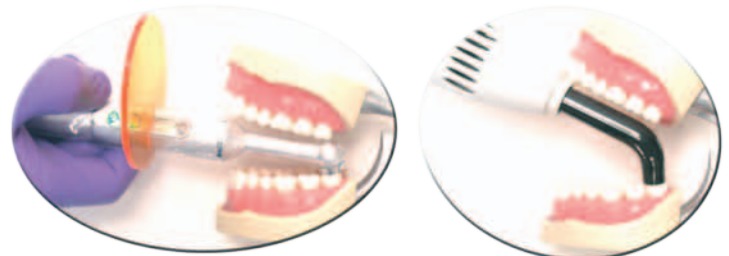
Amazing LCD digital timer in a light this small!

- 5, 10 and 20 digital timer modes preset
- Two power levels for plasma speed or low heat LED bonding
- One click cure with no annoying sleep mode
- Remember the last setting



Low Profile

360° swivel head for easier maneuvering and access



FUSION™

Demetron™ LED II

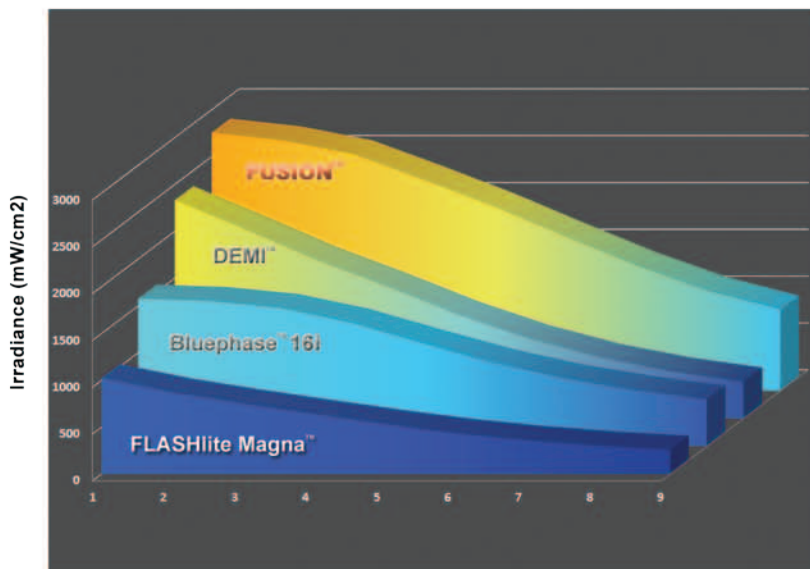
Patented Laser-sharp Focused Beam

The award winning FUSION outputs an unmatched power of 2700 mW/cm² with an unparalleled uniform beam profile and the lowest dispersion

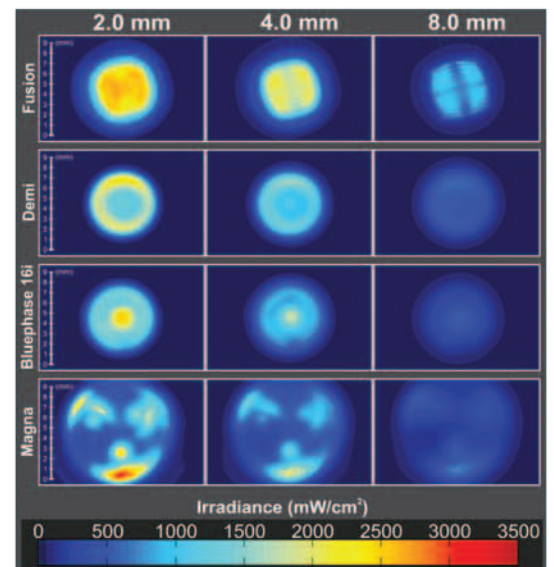
You've got the POWER!

- Plasma-equivalent cure speed
- 10-sec. cures harder than other lights in 40 seconds

Curing Light Dispersion



Two-dimensional isometric irradiance color maps at the distances from light-emitting tip



FUSION-DOE - Dental Oral Examination System

Intra and Extra Oral Exam for Full Oral Cavity Screening

High Power LED and High Contrast Fluorescence Viewer/Filters

Pushing the technology envelopes, DOE uses high power LED illumination and high contrast Fluorescence Viewer/Optical Filters for oral exams beyond normal visualization capabilities.

Small Light Head with Collimated Beam

Patent-pending collimated and uniform beam profile enables best illumination and excitation of fluorescence. Small size and high power enables Intra and Extra oral cavity access for early detection of both traditional and HPV virus associated oral cancer.

Constant Power

With unique heat sink technology and constant current LED driver, DOE maintains constant power throughout the battery run time allowing 20+ patients exams in one full charge.

Easy to use, Portable and Reliable

DOE is as easy to perform as regular exam with a handheld illumination source. It is the size close to a normal handpiece, fully portable with smart non-memory rechargeable battery, and has shock-proof durability with solid metal construction. DOE works any time the doctors or hygienists need it.

Minimum Disposable Cost

Coming with disposable barrier sleeves and easy disinfection with regular disinfectants.

Easy Recording Camera and Documentation

Optional Camera Filter compatible with all major office cameras and recording devices easily integrated with standard practice for oral exam documentation and insurance filing.

Training

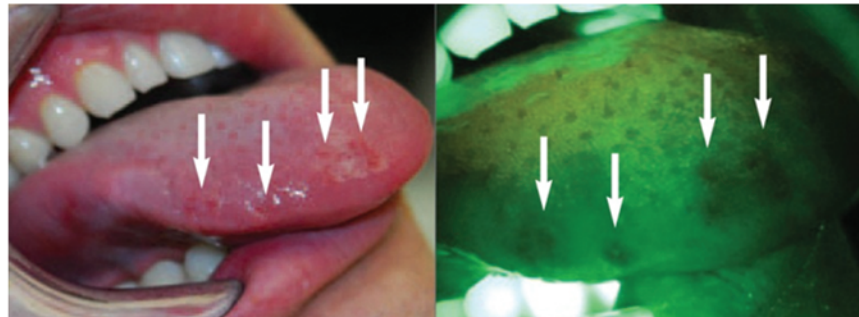
Coming with training DVD and starter documents, you are ready to go in five minutes after receiving your kit!

Built to Last

Robust anodized aluminum metal construction distributes LED heat, prevent scratches, discoloration and damage from accidental falls.

Incredible Engineering Design

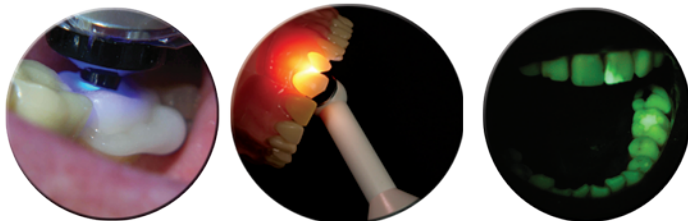
- Slim and ergonomic
 - Weighs only 3.9oz
 - Measures at 7.8 inch
- Sleek metal keypad with easy activation raised buttons
- Three digital presets for rapid cure of any procedures
- Battery bar indicator
- Cordless, pocket-size portability
- **Beyond adhesive cure**
 - High contrast fluorescence imaging for composite removal and oral exam including oral cancer screening
 - Transillumination for caries and lesions detection



Enhanced Examination

Non-memory Li-Ion Battery You can Count On!

- Cordless power that outshines others
- 45 minutes run time; 90 minutes from empty to full charge.
- Multiple charge options
 - Space saving counter stand
 - Direct plug in
 - Chair side charge holder
- Secondary charge indicator
- Constant output throughout battery run time



Blue Light

White Light

Violet Light

Attract New Patients

-> Add Oral Screening

PROFIT FROM the Award-winning FUSION-DOE

Order Information

7700012 FUSION-DOE Kit

Including FUSION 3.0, violet light head, fluorescence viewer, patient safety goggle, and DVD training guide plus documentation.

7700111 DOE SE Kit

Including DOE exam wand with violet light head, fluorescence viewer, patient safety goggle, charging stand, charge adapter, 100 barrier sleeves and DVD training guide plus documentation.

7700010 DOE Deluxe Kit

Including DOE digital wand with violet and white light head, loupes, fluorescence filter pairs, charging stand, charge adapter, two exam tips, patient eyewear goggle, 100 barrier sleeves and DVD training guide plus documentation all contained in Metal Carrying Case.

7500102 FUSION-DOE starter Kit

Violet Light Head and Fluorescence Viewer

8500122 Loupe Fluorescence Filter Pairs

8500123 Fluorescence Viewer

7701000 Metal Carrying Case

7500088 Patient Safety Goggle

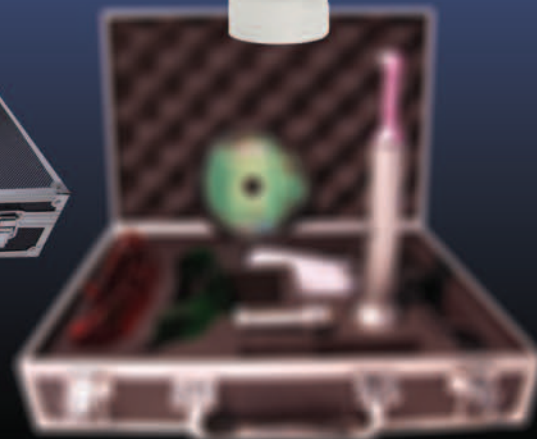
7500060U Violet Light Head

7500060W White Light Head

7500082 Barrier Sleeves (100/pack)

7701100 Camera Filter (58mm standard SLR)

7701118 Camera Stepdown Ring Set (62, 55, 52, 43)



Dr. Howard Glazer, DDS, FAGD

"I have long been a fan of the Fusion for its power, ease of use and value for the nominal cost. Adding to the value is the ability to conduct oral cancer examination. I am a firm believer in and advocate for oral cancer prevention through early diagnosis and the DOE system is a very good way to conduct a fast and non-invasive examination "

DentLight

©2013 DentLight INC Rev. A 1/13

1825 Summit Ave. #210
Plano TX 75074
Tel: 972-889-8857
Fax: 972-346-6550
Email: sales@dentlight.com
www.dentlight.com