

ORAL HEALTH IS ALL ABOUT EARLY DETECTION AND PREVENTION



It is our responsibility!

DOE SE

DENTAL ORAL EXAM SYSTEM



DentLight

DOE SE

Intra and Extra Oral Exam for full oral cavity

High Power LED and High Contrast Fluorescence Viewer

Pushing the technology envelopes, DOE SE uses high power LED illumination and high contrast Fluorescence Viewer for oral exams beyond normal visualization capabilities.

Small Light Head with Collimated Beam

Patent-pending collimated and uniform beam enables best illumination and excitation of fluorescence both intra and Extra oral cavity for early detection of both traditional and HPV virus associated oral cancer.

Constant Power

With unique heat sink technology and constant current LED driver, DOE maintains constant power throughout the battery run time allowing 20 patients exams in one full charge.

Easy to use, Portable and Reliable

With a single push button with preset one patient program, DOE SE is easy to use just like regular exam. At the size of a normal handpiece, fully portable with smart non-memory rechargeable battery, plug-start power driver, and shock-proof durability with solid metal construction, DOE works any time the doctors or hygienists need it.

Minimum Disposable Cost

DOE SE comes with disposable barriers selevs and can be easily disinfected giving you the best return on investment.

Easy Recording Camera and Documentation

Optional Camera Filters compatible with all major cameras and recording devices easily integrated with standard practice for oral exam documentation.

Training

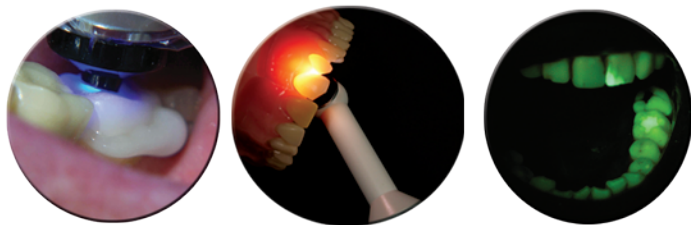
Coming with training DVD and starter documents, you are ready to go in five minutes of receiving the DOE SE kit!

Built to Last

Robust anodized aluminum metal construction distributes LED heat, prevent scratches, discoloration and damage from accidental falls.

Incredible Engineering Design

- Slim and ergonomic
 - Weighs only 3.9oz
 - Measures at 7.8 inch
- Sleek metal keypad with easy activation raised buttons
- Cordless, pocket-size portability
- **Beyond oral exam (optional)**
 - Fast composite curing
 - Transillumination for caries and lesions detection
 - Composite Viewing

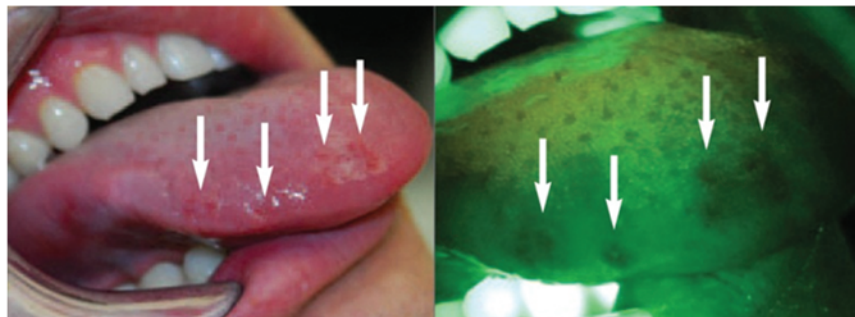


Blue Light

White Light

Violet Light

Enhanced Examination



Non-memory Li-Ion Battery You can Count On!

- Cordless power that outshines others
- 45 minutes run time; 90 minutes from start to full charge.
- Multiple charge options
 - Space saving counter stand
 - Direct plug in
 - Chair side charge holder
- Secondary charge indicator
- Constant output throughout battery run time

Attract New Patient

-> Add Oral Screening